

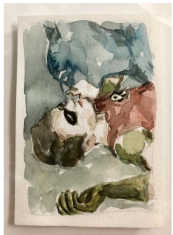
Brainbow

Curated by Matthew Bede Murphy

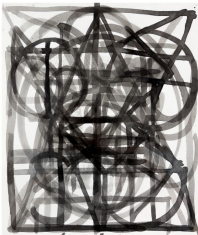
July 29 - August 28, 2021



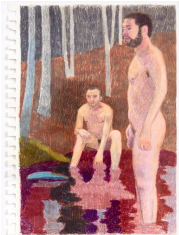
Jon Rapple
Embrace (Bound), 1998
Oil, acrylic, rope on wood
11 x 9.5 in (27.9 x 24.1 cm)



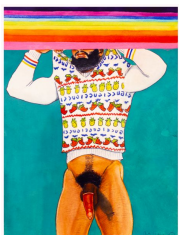
Mark Chamberlain
Untitled, 2003
Watercolor on paper
5 x 7 in (12.7 x 17.8 cm)
NFS



Elijah Burgher
The Blood-Letting 2, 2010
Ink on paper
12 x 9 in (30.5 x 22.9 cm)



Elijah Burgher
Bachelors 2, 2012
Colored pencil on paper
13 x 11 in (33 x 27.9 cm)

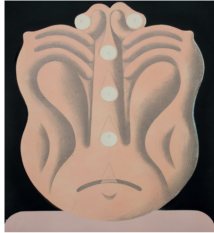


Blake Gildaphish
Red Condom, 2020
Watercolor on paper
12 x 8 in (30.5 x 20.3 cm)

Shelter



Blake Gildaphish
Untitled, 2020
Watercolor on paper
12 x 8 in (30.5 x 20.3 cm)



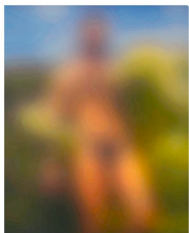
Mike Goodlet
Untitled, 2015
Graphite and spray paint on paper
14.5 x 11 in (36.8 x 27.9 cm)



Steph Gorky
Cock Tease, 1992
Collage, cardboard, photograph
7 x 5 in (17.8 x 12.7 cm)



Dan Halm
12.30.2015.2:21 PM, 2018
Mr. Goodbar Series
UV Curable Inkjet on Aluminum
10 x 8 in (25.4 x 20.3 cm)



Dan Halm
09.13.2018.10:12 AM, 2018
Mr. Goodbar Series
UV Curable Inkjet on Aluminum
10 x 8 in (25.4 x 20.3 cm)

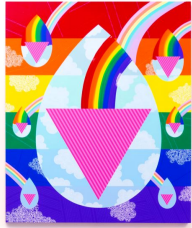


Erik Hanson
Little Big Man, 2021
Oil on canvas
20 x 10 in (50.8 x 25.4 cm)

Shelter



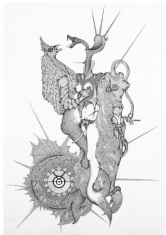
Erik Hanson
Tryouts for the human race, 2019
Oil on canvas
20 x 10 in (50.8 x 25.4 cm)



Eric Hibit
Gay Power Drops, 2017
Acrylic on panel
36 x 30 in (91.4 x 76.2 cm)



Scott Hug
Get Well Soon (Lindsay Lohan), 2007
Silkscreen on canvas
30 x 24 in (76.2 x 61 cm)
NFS



Darcílio Lima
NFS



Michael Madore
Untitled, 1985
Oil on found wooden panel
14 x 8 in (35.6 x 20.3 cm)



Joel Otterson
Touch & Taste, 2013
Pit fired Raku Ceramic

Shelter



Hermes Payrhuber



Mauro Perucchetti (After)

Modern Heroes, 2009

Cast plastic

10 x 5 in (25.4 x 12.7 cm)

NFS



Jesse Finley Reed

Kenny - Showing Off, 2006

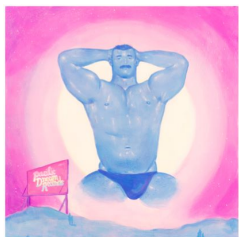
Photographic offset print on bulletin board, white tacks

18 x 23 in (45.7 x 58.4 cm)



William Mortensen

NFS

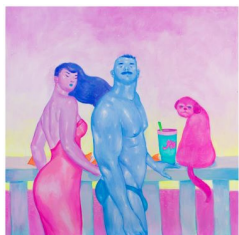


Justin Yoon

Casual Emptiness, 2019

Acrylic, gouache, and glitter on wood panel

24 x 24 in (61 x 61 cm)



Justin Yoon

At Dusk, 2019

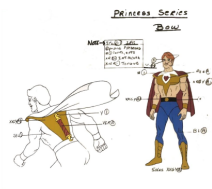
Acrylic, gouache, and glitter on wood panel

24 x 24 in (61 x 61 cm)

Shelter



FISTO/He-Man and the Masters of the Universe, 1983-85
Original production animation cel
11 x 14 in (27.9 x 35.6 cm)
NFS



Princess Series Bow - The Masters of the Universe, 1983-85
Original production animation cel
11 x 14 in (27.9 x 35.6 cm)



He-Man - The Masters of the Universe, 1983-85
Original production animation cel
11 x 14 in (27.9 x 35.6 cm)



Billy
NFS



Scott Hug
(Lenticular), 2015
NFS